



Pearson
Institute
of Higher Education



YOU ARE #PEARSONMADE

Your guide to learning in 2020/2021

CONTENT

03

A word from the
Academic Director

04

The Pearson
Institute story

06

Why Pearson Institute

08

Accreditation &
Quality Assurance

09

Employability
Programmes

10

#PearsonMade
Learning Methodologies

11

Faculties and
Programmes

12

Foundation
Programmes

13

Faculty of
Applied Science

14

Faculty of
Commerce and Law

15

Faculty of Humanities

16

Faculty of Information
and Technology

19

Admission
Requirements

23

Talk to us today

24

Contact details

#DidYouKnow We are the same Pearson that printed your school textbooks and learning materials. From your very first day of school, we've been there by your side, preparing you for future career success.

You are #PearsonMade.

At Pearson Institute of Higher Education, we focus on making our students employable and real-world ready. Every course is designed to equip you with the tools you need to excel in the world of work and achieve your dreams.

Take the next step in your #PearsonMade success story and enrol in one of our more than 40 tertiary programmes.

A WORD FROM THE ACADEMIC DIRECTOR

Whether you are a prospective student or an enquiring parent, thank you for considering Pearson Institute of Higher Education. As a young person, deciding on an education provider for your tertiary studies is one of the most important decisions you'll make in your lifetime, and one that should not be made lightly. I encourage you to take the time to visit your chosen Pearson Institute campus in order to view our excellent facilities and to meet our academic team.

We pride ourselves on providing an education that develops and nurtures the talents of our students and that offers them opportunities to develop and demonstrate these abilities. We choose the most passionate and highly qualified academic professionals to manage our programmes and develop our students. At Pearson Institute you receive a unique Personalised Learning Experience. We keep our class sizes to a minimum in order to maximise student-lecturer interactions and to enhance student performance. Our programmes are structured in a flexible manner to cater to different student learning tendencies.

There are a number of other reasons why you should choose Pearson Institute: we are part of the Pearson Education group, a worldwide education organisation with over two centuries of heritage. We are student centred and produce top quality graduates. We encourage a tech-savvy approach and our campuses utilise the latest technologies. Our 12 campuses across South Africa provide a safe, stable environment for you to focus on your studies. Our campuses engage in a range of employability initiatives in order to enhance your success in the workplace. We hold a number of links to industry which can potentially open opportunities to you, once graduated. We have over 7 000 students and over 35 different nationalities are represented on our campuses. Being part of Pearson, the world's learning company, means you are joining a leading, global education organisation and one of the largest higher education providers in South Africa.

We hope the information in this guide will help you make an informed decision which leads you to the qualification that best suits you. We look forward to working with you during the years ahead to achieve your career aspirations.

*Dr Nhlanhla Thwala
Academic Director, Pearson Institute of Higher Education*



THE PEARSON INSTITUTE STORY

Pearson Institute is part of Pearson, the world's learning company – a top organisation with a global footprint and over 250 years of educational heritage.

Through Pearson's global footprint, Pearson Institute has the ability to not only offer you a localised solutions-based perspective, but also a worldview on global education. We are part of a global network that creates textbooks and learning materials, provides tertiary education, offers part-time learning opportunities, and specialises in professional courses to help you advance your career. We are with you every step of the way, ensuring that you achieve success.

This is what makes YOU #PearsonMade.

Here are some of our key milestones over the past 30 years:



Midrand Graduate Institute (MGI) established.

Founded as a private university-level institution offering accredited and career-focused qualifications that prepare students for a highly competitive job market. From its early beginnings, MGI offered relevant and industry-aligned degrees with an emphasis on interactive, practical and experiential teaching and learning methods.

MGI is acquired by CTI.

CTI is a private higher education institution founded in 1979 with the primary objective to offer new, industry-appropriate and quality qualifications and programmes in South Africa. MGI and CTI remained separately registered after the acquisition, but offered students additional benefits such as 12 educational sites with more than 4 000 students across South Africa.

Pearson acquires a 75% stake in CTI and MGI, as part of its move into the direct delivery of higher education in Africa.

Pearson is the world's learning company. Its origins go as far back as 1724 with the founding of Longman. Today, with over 35 000 employees across 70 countries, Pearson is focused solely on education, helping people make progress in their lives through learning.

MGI and CTI are wholly acquired by Pearson, forming one of the largest providers of private higher education in South Africa.

This acquisition formed part of the company's strategic focus to invest in and have a positive and meaningful impact on education in Africa.

MGI is renamed to Pearson Institute of Higher Education.

With 12 campuses across South Africa, Pearson Institute offers accredited degrees and programmes, allowing students to flourish in the South African and global workplace.

All CTI programmes are now accredited under Pearson Institute of Higher Education.

In the years ahead, Pearson Institute of Higher Education aims to continue to be at the forefront of higher education in South Africa by providing cutting edge education to the future leaders of industry.

WHY PEARSON INSTITUTE?

We see you as a unique individual

Through our smaller class sizes you will interact more closely with our lecturers, which encourages better understanding, better results and independent thinking. At Pearson Institute our students are our priority. They are at the heart of everything we do.

We take an advanced approach to learning

We use an optimal combination of technology-enhanced and traditional learning methods, as well as practical application, to prepare you for the technology-driven and fast-changing work environment of the 21st century.

We teach an industry-led curriculum

We are responsive to the demands of industry and the job market. Therefore, we ensure that our material, content and academic services are relevant and current.



We are a member of a global family

Pearson Institute is a part of Pearson, the world's learning company. The Pearson Education Group has over 35 000 employees across the globe and is one of the largest education companies worldwide.

We have 12 campuses in South Africa

Our campuses are located all across the country, giving students from near and far access to quality education. Every campus has its own unique atmosphere and spirit, and you'll instantly feel at home amidst the many friendly faces.

Employability is our #1 priority

We're all about producing employable graduates who are equipped with more than just book knowledge – we teach you real skills to prepare you for the real world. Through our ongoing relationships with industry partners, we are constantly opening doors for our students.

We employ highly qualified staff

Our academic staff have both academic and industry experience. You will learn from lecturers who are highly qualified and committed to your success.

We have a strong educational heritage

The Pearson Education Group has been in existence for over 250 years. You can rest assured that you are studying with one of the most established names in education around the world.

We offer a wide range of courses

You have a choice of over 40 degree, certificates, qualifications and programmes across a range of faculties. Every programme is designed to equip you with the skills you need in the workplace.

ACCREDITATION & QUALITY ASSURANCE



As a degree-conferring institution, we are proud to offer qualifications that are accredited, registered and quality assured according to regulatory requirements set out by the Department of Higher Education and Training.

Pearson Institute is a registered private higher education institution with the Department of Higher Education and Training under the Education Act No. 101 of 1997.

Registration Certificate number: 2001/HE07/008.

Pearson Institute is accredited by the South African Higher Education Quality Committee (HEQC) (South Africa) of the Council on Higher Education (CHE)

Pearson Institute is registered on the National Qualification Framework (NQF) by the South African Qualifications Authority (SAQA)

Where applicable, qualifications are registered, recognised or endorsed by the relevant professional bodies.

EMPLOYABILITY PROGRAMMES



We believe success is a process. That's why we provide you with learning materials from as early as pre-school to help you achieve career success in the long run. Producing employable graduates is a priority for Pearson Institute. We instil skills which are imperative to one becoming more employable from first year, right through to the completion of your degree. Our ongoing relationships with industry partners also enable us to give our students a competitive edge in the various industries.

Employability events include:

- Regular alumni workshops
- Career fairs
- Faculty workshops with industry partners
- Final year student workshops
- Summer school





**#PEARSONMADE
LEARNING
METHODOLOGIES**

FACULTIES AND PROGRAMMES

At Pearson Institute, learning is a collaborative process. One of the areas that really sets us apart is our interactive and supportive approach to learning. This approach is guided by relevant, quality assured and industry-led curricula. Because we are guided by learner needs, industry trends and employers, we have developed unique methods to encourage participation, to promote active learning and to prepare you for the technology-driven world of work.

We don't just prepare you for success as a student, we give you the tools to succeed in the workplace too. Throughout your studies, you will have opportunities to develop qualities and skills that employers are looking for in today's graduates, such as critical thinking, goal-setting, problem-solving, creativity, working in teams and communication.

We know that, as individuals, you have different learning styles and needs. We also know that different fields of study need unique and specialised teaching approaches. For this reason, we use a blend of traditional lecture led learning as well as industry appropriate methods, all supported by technology and practical application. The language of tuition is English.

In addition, our learning methodology utilises the following techniques and activities:

- Technology-enhanced learning (TEL)
- Guest lectures and field trips
- Practicals
- Projects and research
- Work integrated learning (WIL)

FOUNDATION PROGRAMMES



Foundation Programme

The Foundation Programme gives you the opportunity to bridge the gap between school and higher education in a highly supportive environment. You will develop the required academic and English skills to enter a variety of applicable degree programmes.

English Language Foundation Programme

If you did not complete your secondary schooling in English or if English is not your home language, then this foundation programme is for you. We use unique teaching methods and offer a very supportive environment to enhance your learning success and your ability to participate in lectures, research, tutorials, presentations, group projects and assessments in your degree studies.

These programmes give you the opportunity to access applicable Pearson Institute degree programmes.

Admission requirements

Refer to pages 19, 20 and 21 for admission requirements.

Campus Offering

Visit our website or contact your preferred campus to confirm where the programme is offered.

FACULTY OF APPLIED SCIENCE



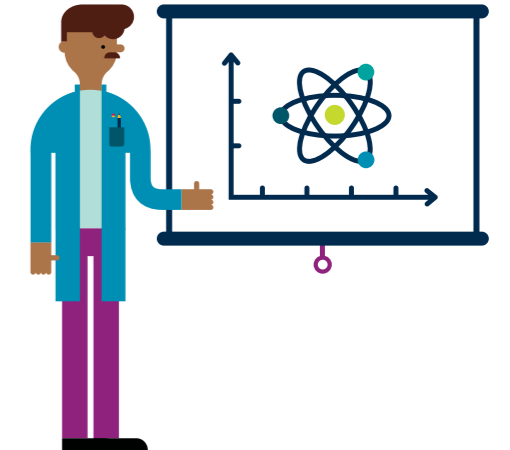
Qualifications and Programmes

Bachelor of Science in Biomedicine

SAQA ID 62752 NQF level 7

Bachelor of Science in Biotechnology Management

SAQA ID 62753 NQF level 7



Admission requirements

Refer to pages 19, 20 and 21 for admission requirements.

Campus Offering

Visit our website or contact your preferred campus to confirm where the qualification is offered.

FACULTY OF COMMERCE AND LAW



Bachelor of Business Administration

SAQA ID 48859 NQF level 7

Bachelor of Commerce

SAQA ID 80730 NQF level 7

Bachelor of Commerce in Accounting

SAQA ID 96721 NQF level 7

Bachelor of Commerce in Human Resource Management

SAQA ID 96720 NQF level 7

Bachelor of Commerce in Law

SAQA ID 86306 NQF level 7

Bachelor of Commerce in Marketing Management

SAQA ID 96718 NQF level 7

Bachelor of Commerce in Tourism Management

SAQA ID 96716 NQF level 7

Bachelor of Commerce Honours in Business Management

SAQA ID 84326 NQF level 8

Qualifications and Programmes

Higher Certificate in Business Management

SAQA ID 83326 NQF level 5

With specialisation in:

- Digital Banking
- Employment Relations
- Funeral Management
- Insurance

Admission requirements

Refer to pages 19, 20 and 21 for admission requirements.

Campus Offering

Visit our website or contact your preferred campus to confirm where the qualification is offered.

FACULTY OF HUMANITIES



Qualifications and Programmes

Bachelor of Arts

SAQA ID 62761 NQF level 7

With specialisation in:

- General
- Tourism
- Media Studies
- Psychology and Human Resource
- Psychology and Political Science
- Psychology and English

Bachelor of Arts in Graphic Design

SAQA ID 99332

Bachelor of Arts Honours in Graphic Design

SAQA ID 90541 NQF level 8

Admission requirements

Refer to pages 19, 20 and 21 for admission requirements.

Campus Offering

Visit our website or contact your preferred campus to confirm where the qualification is offered.

FACULTY OF INFORMATION TECHNOLOGY



Bachelor of Science in Information Technology SAQA ID 80887 NQF level 7

With specialisation in:

- Data Science
- Robotics
- Software Engineering
- Security and Network Engineering

Bachelor of Science Honours in Information Technology SAQA ID 84566 NQF level 8

With specialisation in:

- Data Science
- Robotics
- Software Engineering
- Security and Network Engineering

Qualifications and Programmes

Bachelor of Science in Computer Science SAQA ID 74131 NQF level 7

Bachelor of Science in Informatics SAQA ID 62754 NQF level 7

Bachelor of Science in Internet Communication SAQA ID 97185 NQF level 7

Admission requirements

Refer to pages 19, 20 and 21 for admission requirements.

Campus Offering

Visit our website or contact your preferred campus to confirm where the qualification is offered.

Higher Certificate in Information Systems (Open Source) SAQA ID 90865 NQF level 5

Higher Certificate in Information Systems SAQA ID 102780 NQF level 5

With specialisation in:

- Cloud Computing
- Cyber Security
- Data Analytics
- Engineering
- Internet Development
- Machine Learning
- Network Engineering*
- Software Development
- Robotics and Intelligent Systems

*Registered on the National Qualifications Framework (NQF) as a focus area of the Higher Certificate in Information Systems with specialisation in Engineering qualification NQF level 5.

Admission requirements

Refer to pages 19, 20 and 21 for admission requirements.

Campus Offering

Visit our website or contact your preferred campus to confirm where the qualification is offered.

Short Learning Programme in Basic Programming**

Short Learning Programme in IT Engineering**

Short Learning Programme in Internet Development (Specialist)**

**These Short Learning Programmes are not accredited by the Higher Education Quality Committee (HEQC), nor is it registered with the South African Qualifications Authority (SAQA), however the modules within these short learning programmes contain the accredited NQF level 5 modules which may allow for direct articulation into the full qualifications.



PEARSON INSTITUTE ADMISSION REQUIREMENTS

General requirements

Qualification	Minimum admission requirements
Foundation Programmes	<ul style="list-style-type: none"> National Senior Certificate (NSC) with Higher Certificate, Diploma or Bachelor Degree entry or an equivalent international school-leaving certificate on an NSC level (NQF 4), evaluated and confirmed by SAQA. Comply with the additional requirements as stated in the additional admission requirements table.
Short Learning Programmes	<ul style="list-style-type: none"> National Senior Certificate (NSC) with Higher Certificate, Diploma or Bachelor Degree entry or an equivalent international school-leaving certificate on an NSC level (NQF 4), evaluated and confirmed by SAQA. Obtain the required results in the Placement Assessment.
Higher Certificate	<ul style="list-style-type: none"> National Senior Certificate (NSC) with Higher Certificate, Diploma or Bachelor degree entry or an equivalent international school-leaving certificate on at least a NQF level 4, evaluated and confirmed by SAQA. National Certificate Vocational (NCV) at NQF 4 with Higher Certificate entry. Recognition of Prior Learning (RPL): alternative access via the submission of a Portfolio of Evidence and an assessment if required. Comply with the extra requirements as stated in the additional admission requirements table.
Bachelor Degree	<ul style="list-style-type: none"> National Senior Certificate (NSC) with Bachelor Degree entry. National Certificate Vocational (NCV) at NQF 4 with Bachelor Degree entry. Alternatively, a prospective student should have successfully completed the relevant Pearson Institute Foundation Programme. On successful completion of the Foundation Programme, students are required to apply to Universities South Africa (USAf) for a certificate of exemption in order to be admitted to a degree programme. Alternatively, a prospective student should have successfully completed a Higher Certificate in a cognate field. Applicants with an international school-leaving certificate need to provide a certificate of exemption issued by Universities South Africa (USAf). Recognition of Prior Learning (RPL): alternative access via the submission of a Portfolio of Evidence and an assessment if required. Comply with the additional requirements as stated in the additional admission requirements table.
Honours Degree	<ul style="list-style-type: none"> A recognised undergraduate degree or equivalent for the specific honours Degree or an appropriate Advanced Diploma. A minimum of 60% average during the exit year of the applicable undergraduate qualification. Specific modules may be required to have been completed at the undergraduate level.

Calculation of Pearson Institute points

NSC%	90 – 100%	80 – 89%	70 – 79%	60 – 69%	50 – 59%	40 – 49%	30 – 39%	0 – 29%
Points	8	7	6	5	4	3	2	1

Additional admission requirements for Pearson Institute qualifications and programmes

Qualification/Programme	Additional admission requirements
Foundation Programme	<ul style="list-style-type: none"> 17-24 Pearson Institute points or more. 40% or above for Grade 12 English as a home or first additional language. 30% or above for Grade 12 Mathematics or Mathematical Literacy or Technical Mathematics.
Foundation Programme (BSc)	<ul style="list-style-type: none"> 24-31 Pearson Institute points or more. 40% or above for Grade 12 English as a home or first additional language. 30% or above for Grade 12 Mathematics.
English Language Foundation Programme	<ul style="list-style-type: none"> 17-24 Pearson Institute points. 30% or above for Grade 12 Mathematics or Mathematical Literacy or Technical Mathematics. You must have completed an internationally accepted English language assessment with the relevant Common European Framework Reference (CEFR) for languages (at levels B1 or higher).
Higher Certificates in Information Systems (Open Source) (Internet Development) (Engineering) (Network Engineering) (Software Development) (Security and Network Engineering) (Data Science) (Robotics) (Software Engineering)	<ul style="list-style-type: none"> Obtained the required results in the Placement Assessment.
BSc (Computer Science), BSc (Informatics) and BSc (Internet Communication)	<ul style="list-style-type: none"> 32 Pearson Institute points or more. 50% or above for Grade 12 English. 50% or above for Grade 12 Mathematics. The points attained for the best two of the subjects of English, Mathematics and Computer Science must be doubled.
BSc (Information Technology)	<ul style="list-style-type: none"> 50% or above for Grade 12 Mathematics. <p>Those with a pass in Technical Mathematics will be considered by the Head of Programme. Students with Mathematics Literacy (50% or more) must enrol for Introduction to Mathematics and Mathematics for Degree Studies B (IT) before attempting Mathematics 1A. Students with a pass of less than 50% in Mathematics must enrol for Mathematics for Degree Studies B (IT) before attempting Mathematics 1A.</p>
BSc in Biomedicine BSc in Biotechnology Management	<ul style="list-style-type: none"> 32 Pearson Institute points or more. 50% or above for Grade 12 English. 50% or above for Grade 12 Mathematics. 50% or above for Grade 12 Biology/Life Sciences. The points attained for the best two of the subjects of Biology/Life Sciences, Mathematics, Chemistry, Physics and Physical Science must be doubled.
BBA, BCom (Human Resource Management), BCom (Law), BCom (Marketing Management) and BCom (Tourism Management)	<ul style="list-style-type: none"> 25 Pearson Institute points or more.

Qualification/Programme	Additional admission requirements
BCom (Accounting)	<ul style="list-style-type: none"> 25 Pearson Institute points or more. 50% or above for Grade 12 Mathematics.
BA	<ul style="list-style-type: none"> 25 Pearson Institute points or more. 50% or above for Grade 12 English. 50% or above for Grade 12 Mathematics for students electing Economics as a major. <p>Students with Mathematics Literacy (50% or more) must enrol for Introduction to Mathematics and Mathematics for Degree Studies B (Commerce). Students with a pass of less than 50% in Mathematics must enrol for Mathematics for Degree Studies B (Commerce).</p>
BA (Graphic Design)	<ul style="list-style-type: none"> 25 Pearson Institute points or more. Approval of a Portfolio.

Additional admission requirements for Pearson Institute honours qualifications

Qualification/Programme	Additional admission requirements
BSc Honours in Information Technology	<ul style="list-style-type: none"> Completion of recognised undergraduate degree or equivalent for the specific honours degree. An equivalent foreign undergraduate qualification on NQF level 7 approved by SAQA. A minimum of 60% average during the exit year of the applicable undergraduate qualification.
BA Honours in Graphic Design	<ul style="list-style-type: none"> Completion of recognised undergraduate degree or equivalent for the specific honours degree. An equivalent foreign undergraduate qualification on NQF level 7 approved by SAQA. A minimum of 60% average during the exit year of the applicable undergraduate qualification.
BCom Honours in Business Management	<ul style="list-style-type: none"> Completion of recognised undergraduate degree or equivalent for the specific Honours degree. An equivalent foreign undergraduate qualification on NQF level 7 approved by SAQA. A minimum of 60% average during the exit year of the applicable undergraduate.



Admission requirements for South African Senior Certificates achieved prior to 2008

If you completed Grade 12 up to December 2008 without any endorsement, please contact a Higher Education Consultant for further information.

Minimum admission requirements for undergraduate degrees

- You must have a minimum achievement level 4 in four NSC examination subjects.
- Life Orientation will be granted 3 points from any percentage above 40%.

National Certificate Vocational (NQF 4) admission requirements

- You must have a minimum of 50% in English.
- Life Orientation and Mathematics/Mathematical Literacy/ Technical Mathematics.
- You must have a minimum of 70% in four vocational subjects chosen from the NCV (NQF 4) subjects.
- The NCV (NQF4) subjects must relate to the degree for which you intend enrolling.

For Admission into Bachelor Degree

- You must have achieved at least 60% in three Fundamental subjects (English, Mathematics or Math literacy or Technical Mathematics, Life orientation);
- You must have a minimum of 70% in the four Vocational subjects, chosen from the NC(V) registered subject list.
- The NCV (NQF4) subjects must relate to the degree for which you intend enrolling.

TALK TO US TODAY

Visit our website on www.pearsoninstitute.africa or connect with us, using one of our social platforms.

-  @PearsonInstitute
-  @P_I_H_E
-  Pearson Institute
-  @pearson_institute

We have 12 Pearson Institute campuses across South Africa.



Please visit our website to learn more about these programme offerings. Terms and Conditions apply.

www.pearsoninstitute.africa

Photography

Christof van der Walt: front cover, pages 09, 10, 18, 22, back cover
Shutterstock/Billion Photos: page 02

Please note: We have made every effort to ensure the accuracy of the information contained in this brochure at the time of going to print. However, this information is subject to change and alterations may occur, including but not limited to, programmes, fees, staff and services described in this brochure. For this reason, it is important that you check the website for the most up-to-date information or contact us using the contact details contained in this document. We reserve the right to amend, withdraw or add to, and at our discretion, qualifications, programme delivery and content, services, facilities or locations of delivery at any time before or after an applicant's admission. We will, however, take reasonable steps to reduce any disruption to enrolled students. In the event of any of the above circumstances occurring, we cannot accept liability for any complaints or claims for costs, losses or damages made by you.



CAMPUS CONTACT DETAILS

Bedfordview Campus

📍 9 Concorde Road East, Bedfordview
☎ +27 (0)10 595 2999
✉ bedfordview@pearson.com

Bloemfontein Campus

📍 Tourist Centre, 60 Park Avenue, Willows, Bloemfontein
☎ +27 (0)51 430 2701
✉ bloemfontein@pearson.com

Cape Town Campus

📍 The Brookside Building, 11 Imam Haron Street (old Lansdowne Road), Claremont
☎ +27 (0)21 204 1400
✉ capetown@pearson.com

Durban Campus

📍 1 Lunar Way, Umhlanga Ridge, Umhlanga
☎ +27 (0)31 564 0570/5
✉ durban@pearson.com

Durbanville Campus

📍 Kaapzicht, 9 Rogers Street, Tyger Valley
☎ +27 (0)21 914 8000 / +27 (0)21 204 2001
✉ durbanville@pearson.com

East London Campus

📍 12 Stewart Drive, Berea, East London
☎ +27 (0)43 721 2564
✉ eastlondon@pearson.com

Midrand Campus

📍 44 Alsatian Road, Glen Austin, Extension 3, Midrand
☎ +27 (0)11 690 1700
✉ midrand@pearson.com

Nelspruit Campus

📍 50 Murray Street, Nelspruit
☎ +27 (0)13 755 3918
✉ nelspruit@pearson.com

Port Elizabeth Campus

📍 Building 4, Ascot Office Park, Cnr Ascot and Conyngham Roads, Greenacres
☎ +27 (0)41 374 7978
✉ port_elizabeth@pearson.com

Potchefstroom Campus

📍 12 Esselen Street, Cnr Esselen Street and Steve Biko Avenue, Die Bult, Potchefstroom
☎ +27 (0)18 297 7760
✉ potchefstroom@pearson.com

Pretoria Campus

📍 22 Umgazi Street, Ashlea Gardens, Pretoria
☎ +27 (0)12 348 3060
✉ pretoria@pearson.com

Vanderbijlpark Campus

📍 Building 2, Cnr Rutherford and Frikkie Meyer Boulevards, Vanderbijlpark
☎ +27 (0)16 931 1180
✉ vanderbijlpark@pearson.com

International Students Office

📍 44 Alsatian Road, Glen Austin, Extension 3, Midrand
☎ +27 (0)11 690 1733/1705
✉ international.office@pearson.com





Pearson Institute of Higher Education is part of Pearson, the world's learning company. Pearson is the corporate owner, not a registered provider nor conferrer of qualifications in South Africa. Pearson Institute of Higher Education (Pty) Ltd. (formerly Midrand Graduate Institute and CTI Education Group) is registered with the Department of Higher Education and Training as a private higher education institution under the Higher Education Act, 101, of 1997. Registration Certificate number: 2001/HE07/008. www.pearsoninstitute.ac.za